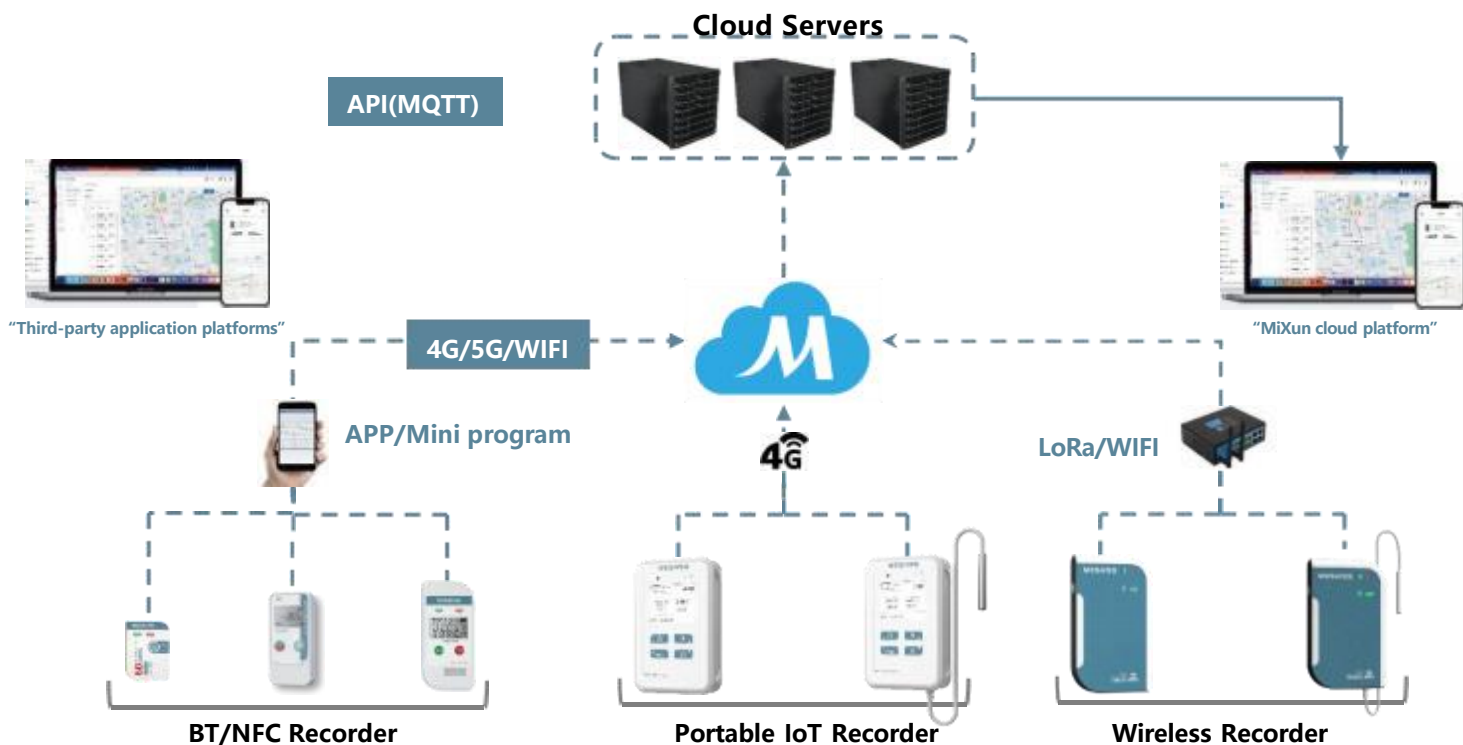


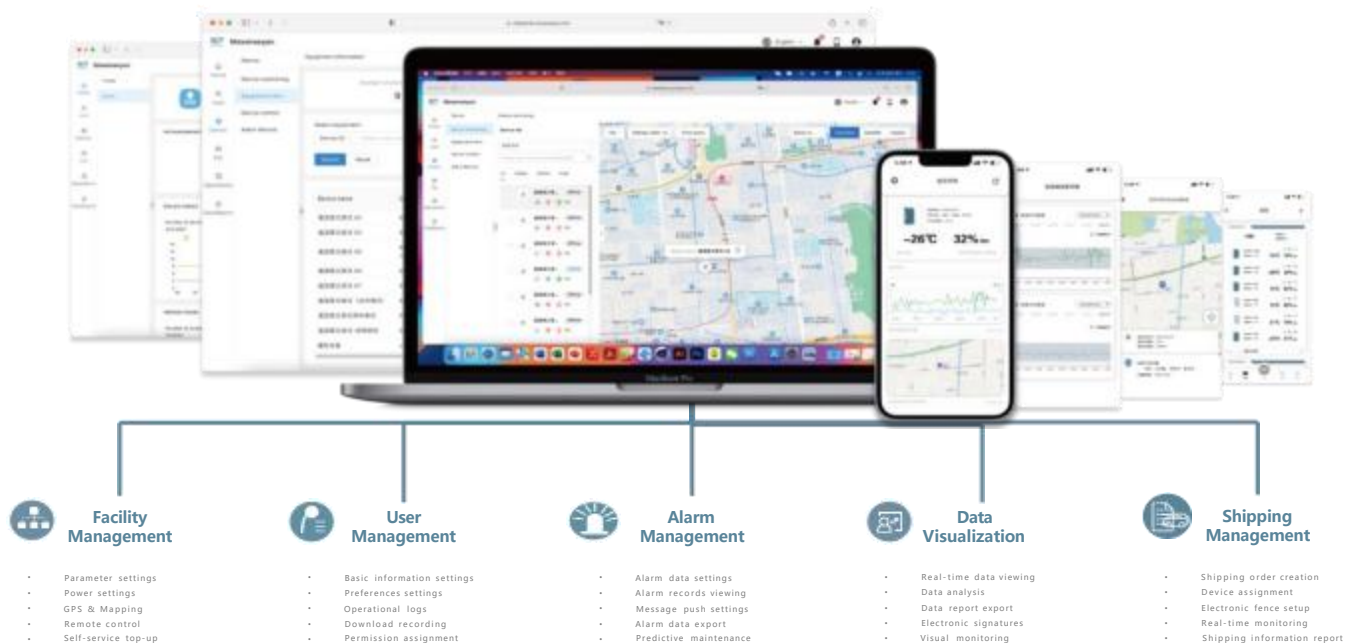
CLOUD SERVE SERIES

MESAVSS Cold Chain Management IoT Platform

CLOUD FRAMEWORK



IOT FUNCTION



PLATFORM

Convenient PC & APP Platform

PC Platform

Easy To USE

Integrated Monitoring

Early Warning Control

Data Integrity

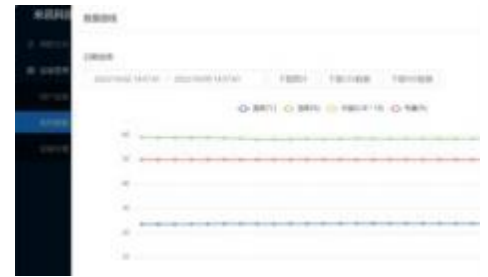
Classified Management



Platform login screen



Live view interface



Curve viewing interface



Software login screen



Overview interface



GPS positioning interface

Mobile Platform

Convenient for users to achieve cloud data management anytime and anywhere.



IOTEMP SERIES

Real-time Temperature And Location Monitors



IoTemp-EPRO 4G

TECHNICAL DATA

□ Measurement Range	-200°C to +100°C (-328°F to 212°F) 5%-95%RH (Humidity)
□ Sensor	External Digital STS4x
□ Type/Size	Multi use(Reusable)+Rechargeable 122*78*27mm
□ Cellular	Global LTE 4G/5G, fallback 2G network
□ Location Type	GPS & LBS(even in indoor, freezer and incubator)
□ Accuracy	±0.3°C(-20°C...40°C), ±0.5°C(-40°C...85°C) / ±5%RH(Humidity)
□ Alarm Type	Buzzer, Email, SMS, Mobile App
□ Battery Life	120 Days(25°C, 60min Interval) MAX 100000 circular logging
□ Certifications	FCC, CE, RTCA/DO-160G, UN38.3, ROHS, WEEE, CB, IATA

FEATURES



Real-time reporting and alarming



Multiple Alarm Model



Large-capacity battery



Data Retransmission



OTA Upgrading



Multiple terminal visualization